



## Fibrotic lung diseases: Basic Principles, Common Problems, and Reporting

**Brandon T. Larsen, MD, PhD**  
Senior Associate Consultant  
Department of Laboratory Medicine and Pathology  
Mayo Clinic Arizona

Arizona Society of Pathologists Spring 2018 Meeting  
April 7, 2018

©2013 MFMER | slide-1

## Disclosures

Relevant financial relationships:

None

Off-label usage:

None



©2013 MFMER | slide-2

## Learning Objectives

At the end of this course, the participant should be able to do the following:

- Explain the prognostic and therapeutic implications of a diagnosis of IPF versus other fibrotic ILDs
- Describe the international consensus criteria for the diagnosis of IPF, and explain when and how the surgical lung biopsy is used to establish this diagnosis
- Explain the histologic similarities and differences among diseases that produce a UIP pattern
- Explain how to formulate a clinically useful pathology report for fibrotic ILDs



©2013 MFMER | slide-3

## Lecture Outline

- Basic Principles
- Diagnostic Approach to Common Fibrotic ILDs
- Formulating a Clinically Useful Report



©2013 MFMER | slide-4

# Medical Training

## Biology:

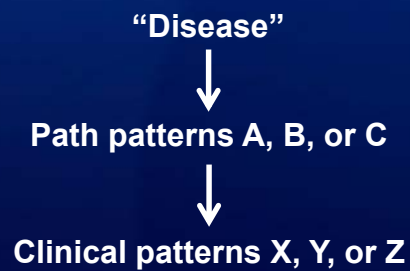


## Medicine:



# Harsh Reality

## Biology:



## Medicine:

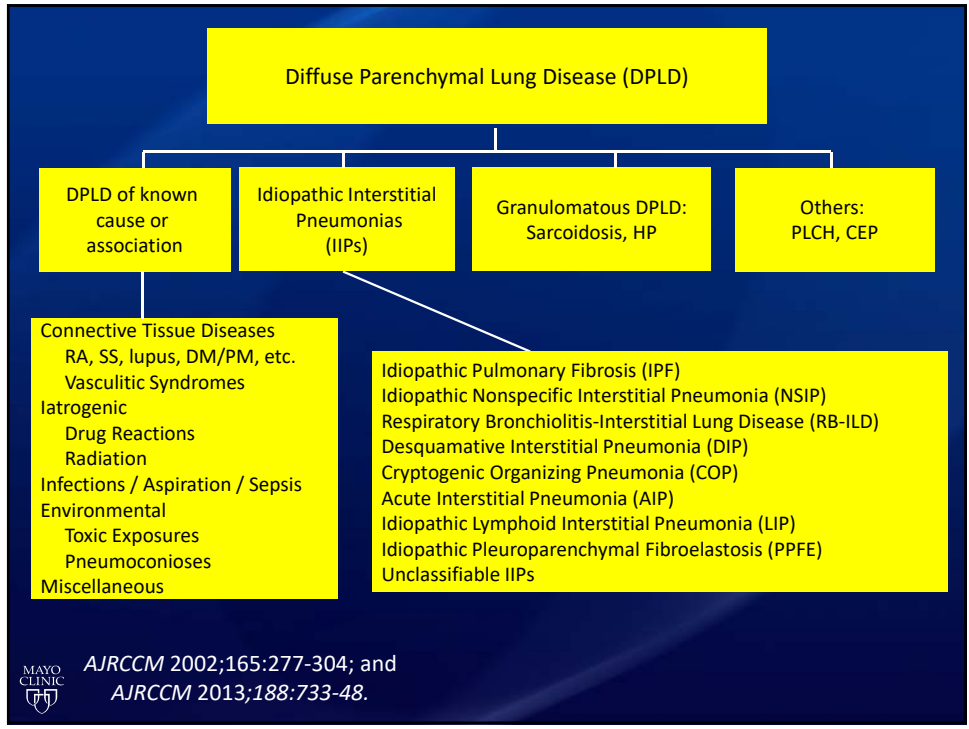


## Diffuse Interstitial Lung Disease: Patterns change over time

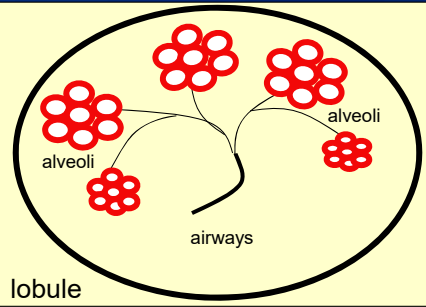


## Part I: Basic Principles

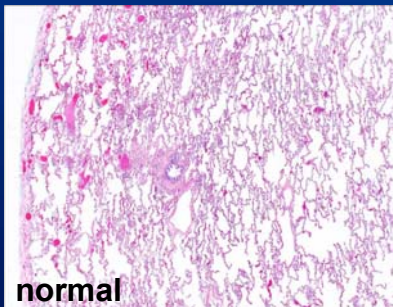





## Basic principles of lung injury and repair



**mild to moderate injury**

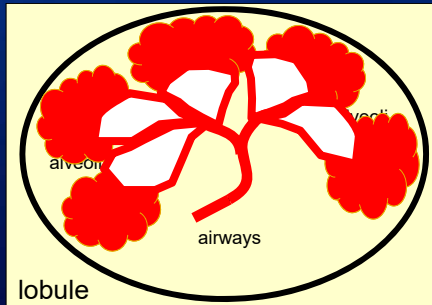


**normal**

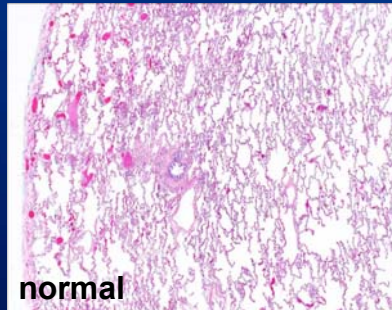


**Mild diffuse fibrosis**

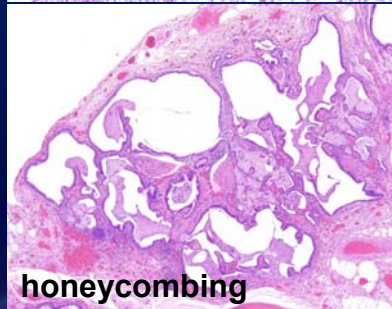
## Basic principles of lung injury and repair



severe injury



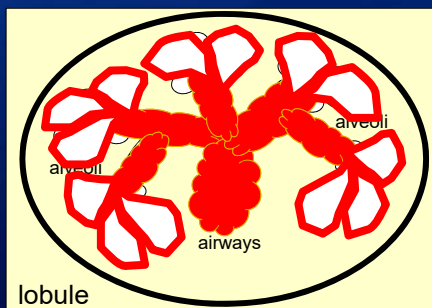
normal



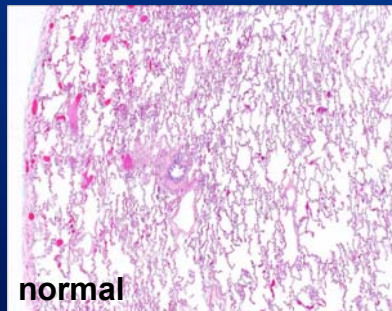
honeycombing



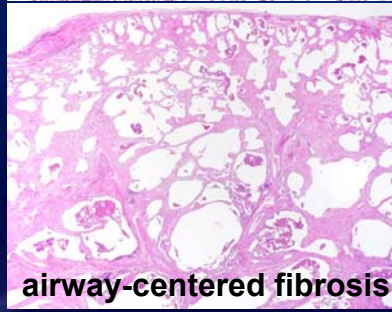
## Basic principles of lung injury and repair



inhalational injury:  
central



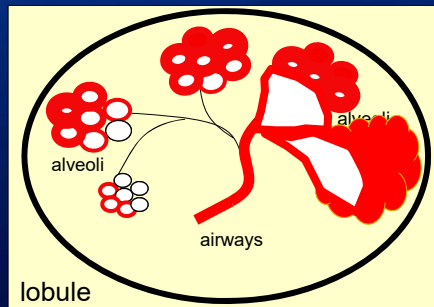
normal



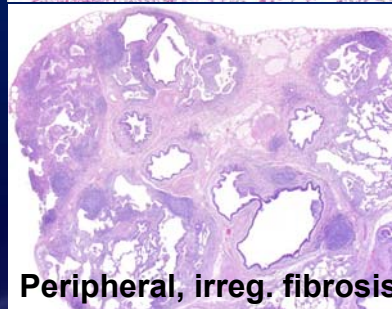
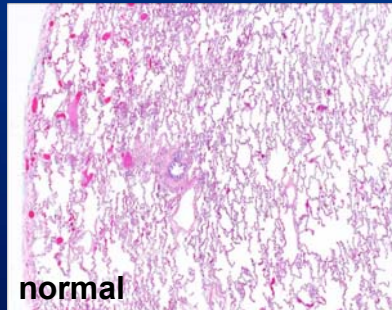
airway-centered fibrosis



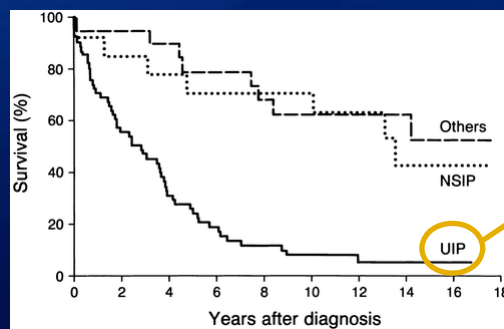
## Basic principles of lung injury and repair



autoimmune injury:  
peripheral, diffuse, irregular



## Prognostic significance of histologic patterns of ILD



### Idiopathic

- IPF

### Non-idiopathic

- Chr HP
- CTD
- Asbestosis
- Chr drug rxn
- Etc.

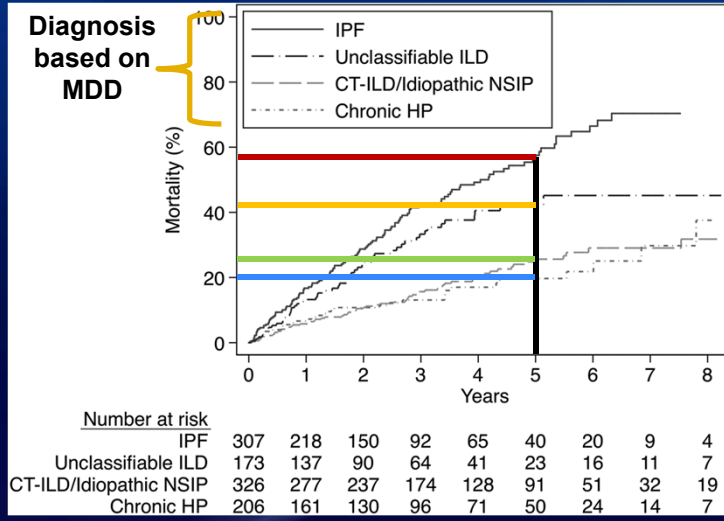
Bjoraker JA et al., *Am J Respir Crit Care Med* 1998 Jan;157(1):199-203



# Prognostic significance of etiology of ILD



Unadjusted Kaplan-Meier figure stratified by ILD subtype. CT-ILD = connective tissue disease-associated interstitial lung disease; HP = hypersensitivity pneumonitis; ILD = interstitial lung disease; IPF = idiopathic pulmonary fibrosis; NSIP = nonspecific interstitial pneumonia.



TO: NEW ENGLAND JOURNAL OF MEDICINE

ORIGINAL ARTICLE

**Prednisone, Azathioprine, and N-Acetylcysteine for Pulmonary Fibrosis**

The Idiopathic Pulmonary Fibrosis Clinical Research Network\*

ABSTRACT

**BACKGROUND**  
The members of the writing committee...  
\*Members of the Idiopathic Pulmonary Fibrosis Clinical Research Network are listed in the Supplementary Appendix, available at NEJM.org.

**CONCLUSIONS**  
Increased risks of death as well as pulmonary fibrosis progression were observed in patients receiving prednisone, azathioprine, and NAC compared with placebo.

N Engl J Med. 2012 May 24;366(21):1968-77.

**C Time to Death or Hospitalization**

No. at Risk		0	15	30	45	60
Combination therapy	77	40	29	23	10	
Placebo	78	55	42	26	16	



THE NEW ENGLAND JOURNAL OF MEDICINE

ORIGINAL ARTICLE

### A Phase 3 Trial of Pirfenidone in Patients with Idiopathic Pulmonary Fibrosis

Talmadge E. King, Jr., M.D., Williamson Z. Bradford, M.D., Ph.D.,  
 Sorrento Castro Bernardini, M.D., Elizabeth A. Fagan, M.D.,  
 Ian Giuseppe, M.B., B.S., Ph.D., Marilyn E. Ginsberg, M.D., Edward Givner, M.D.,  
 Peter M. Hayslip, M.D., David Kardatzke, Ph.D., Lisa Lancaster, M.D.,  
 David J. Lederer, M.D., Steven D. Nathan, M.D., Carlos A. Perera, M.D.,  
 Steven A. Sahn, M.D., Robert Sussman, M.D., Jeffrey J. Sznajder, M.D.,  
 and Paul W. Noble, M.D., for the ASCEND Study Group

**ABSTRACT**

**BACKGROUND:** In two of three phase 3 trials, pirfenidone, an oral antifibrotic drug, reduced disease progression, as measured by the decline in forced vital capacity, in patients with idiopathic pulmonary fibrosis. In the third trial, the primary end point was not achieved. We sought to confirm the beneficial effect of pirfenidone on disease progression in such patients.

**METHODS:** In this phase 3 study, we randomly assigned 555 patients with idiopathic pulmonary fibrosis to receive either oral pirfenidone (2400 mg per day) or placebo. The primary end point was the change in FVC or death at week 52. Secondary end points were the 6-minute walk distance, progression-free survival, time from any cause or from idiopathic pulmonary fibrosis.

**RESULTS:** In the pirfenidone group, as compared with the placebo group, there was a reduction of 47.9% in the proportion of patients who had an absolute 20 percentage points or more in the percentage of predicted FVC (P<0.001); there was also a relative increase of 132.5% in the proportion of patients who had a decline in FVC (P<0.001). Pirfenidone reduced the decline in the 6-minute walk distance (P<0.001) and improved progression-free survival (P<0.001), a significant between-group difference in adverse events (P<0.001) or death from any cause (P<0.001) or from idiopathic pulmonary fibrosis (P<0.001) in a prespecified pooled analysis incorporating results from two previous trials. The between-group difference favoring pirfenidone was significant from any cause (P<0.001) and from idiopathic pulmonary fibrosis (P<0.001), and skin-related adverse events were more common in the pirfenidone group than in the placebo group but rarely led to treatment discontinuation.

**CONCLUSIONS:** Pirfenidone, as compared with placebo, reduced disease progression by lung function, exercise tolerance, and progression-free survival in patients with idiopathic pulmonary fibrosis. Treatment was associated with an absolute increase in adverse events, including skin-related events.

Downloaded from nejm.org at University of Arizona on December 7, 2015. For personal use. All rights reserved. Copyright © 2015 Massachusetts Medical Society. A

**D Progression-free Survival**

Hazard ratio, 0.57 (95% CI, 0.43–0.77)  
P<0.001

No. at Risk	0	13	26	39	52
Pirfenidone	276	269	243	219	144
Placebo	273	262	225	192	113

N Engl J Med. 2014 May 29;370(22):2083-92.

MAYO CLINIC

## Treatment Differences in 2018

IPF	CTD-ILD	Chr HP
<ul style="list-style-type: none"> <li>• Anti-fibrotic agents (pirfenidone, nintedanib)</li> <li>• PPI</li> <li>• AVOID immunosuppression</li> </ul>	<ul style="list-style-type: none"> <li>• Prednisone</li> <li>• Azathioprine</li> <li>• Mycophenolate</li> <li>• Methotrexate</li> <li>• Cyclophosphamide</li> <li>• Rituximab</li> </ul>	<ul style="list-style-type: none"> <li>• Removal of offending antigen</li> <li>• Steroids</li> <li>• Rituximab?</li> </ul>

➤ Pattern matters  
➤ Etiology matters

MAYO CLINIC

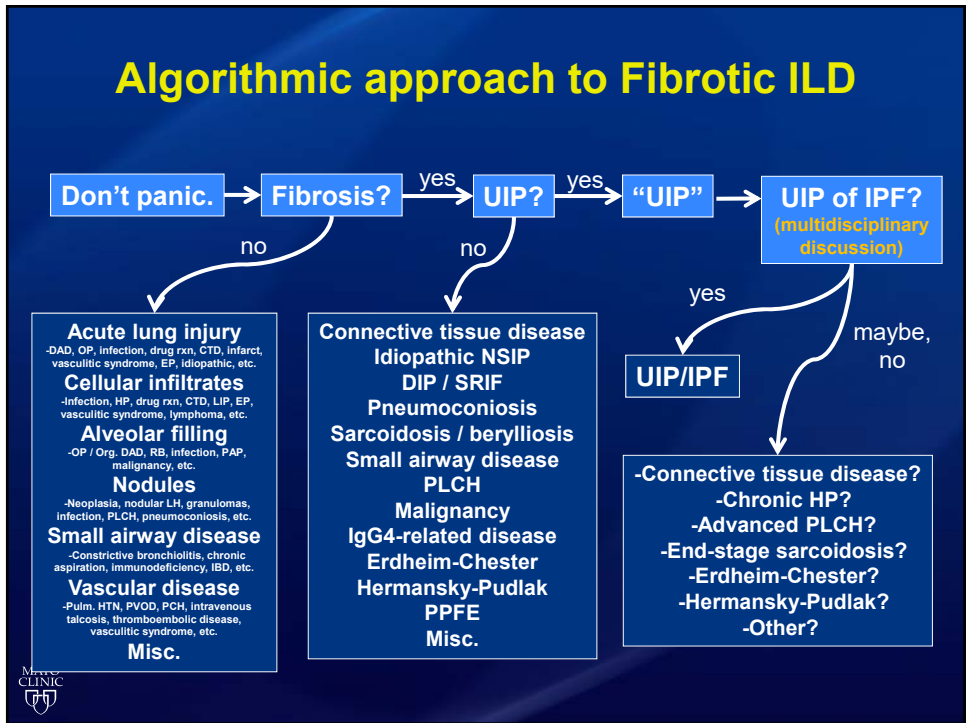
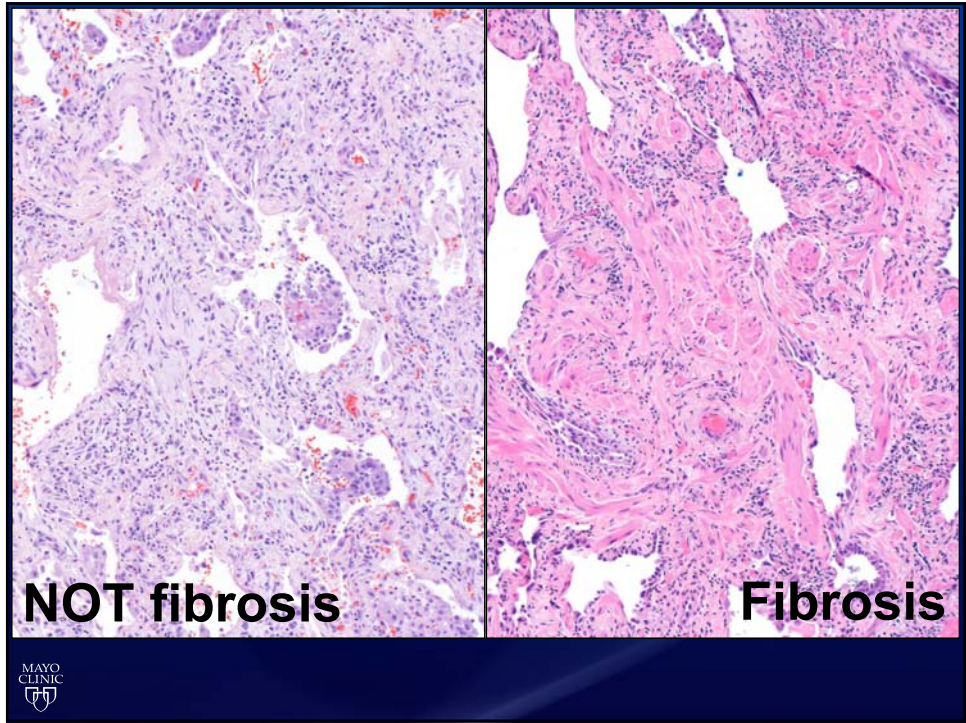
## Part II: Diagnostic Approach to Fibrotic ILDs



### Algorithmic approach to Fibrotic ILD

Don't panic. → Fibrosis?





## Idiopathic pulmonary fibrosis



## Idiopathic pulmonary fibrosis

- Idiopathic (dx of exclusion!)
- Most common in elderly (usu. >60 yrs)
- Strongly associated with smoking
- Relentlessly progressive
- Median survival <3 yrs
- UIP pattern on imaging
- UIP pattern on histology

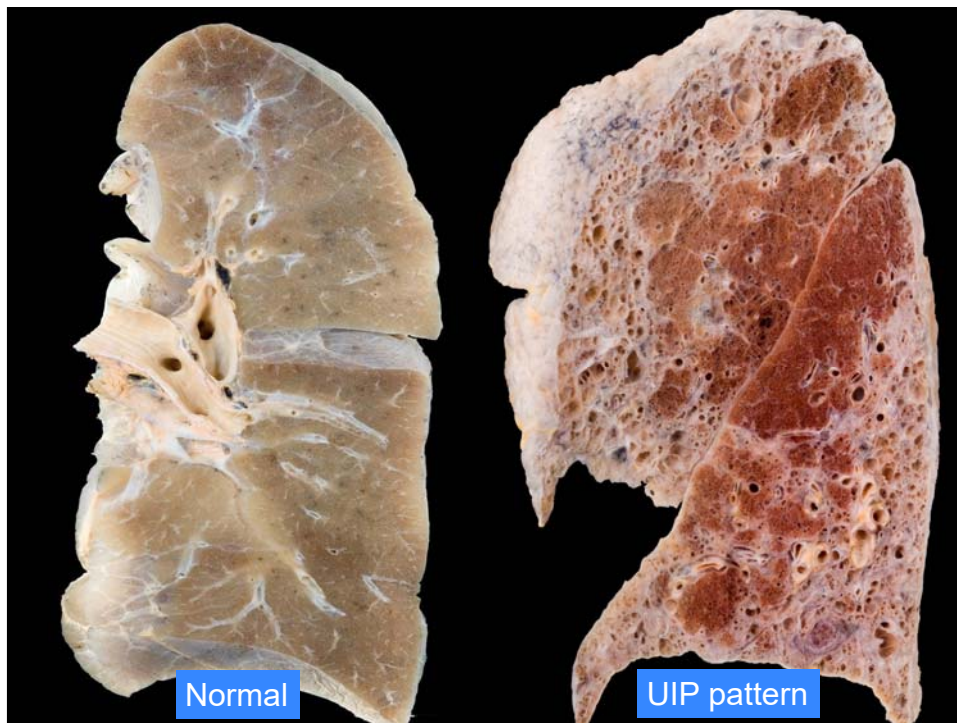


## Usual Interstitial Pneumonia

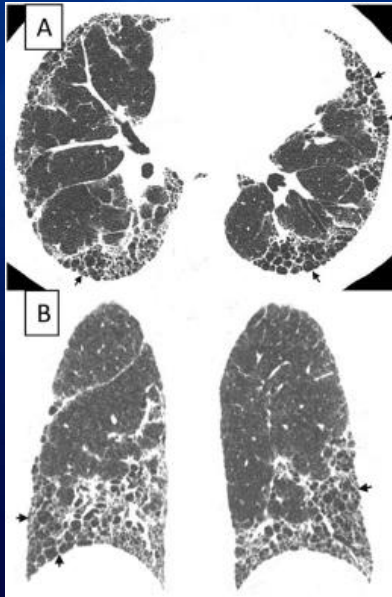
- UIP is a pathologic PATTERN, not a disease!
- **Spatially heterogeneous** fibrosis
  - Patchy
  - Architectural distortion (honeycombing)
  - Subpleural / peripheral
  - Lower lung zones
- **Temporally heterogeneous** fibrosis
  - Old fibrosis
  - Young fibrosis – fibroblast foci



©2013 MFMER | slide-25



## Radiologic UIP pattern in IPF

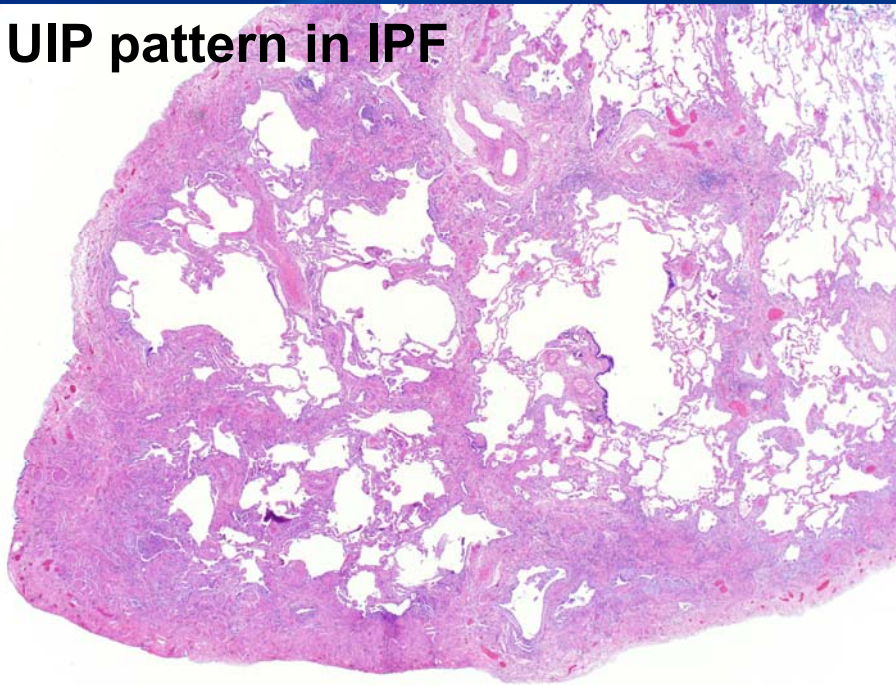


- Reticular abnormalities (i.e. fibrosis)
- Subpleural, basal predominance
- Honeycombing ± traction bronchiectasis
- No features inconsistent with UIP pattern

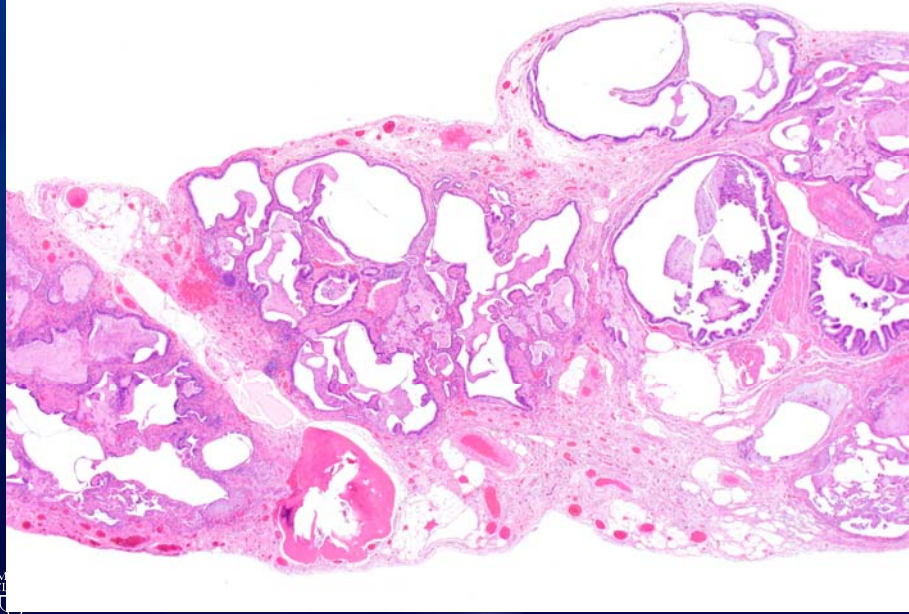
Raghu G et al., Am J Respir Crit Care Med. 2011;183:788-824



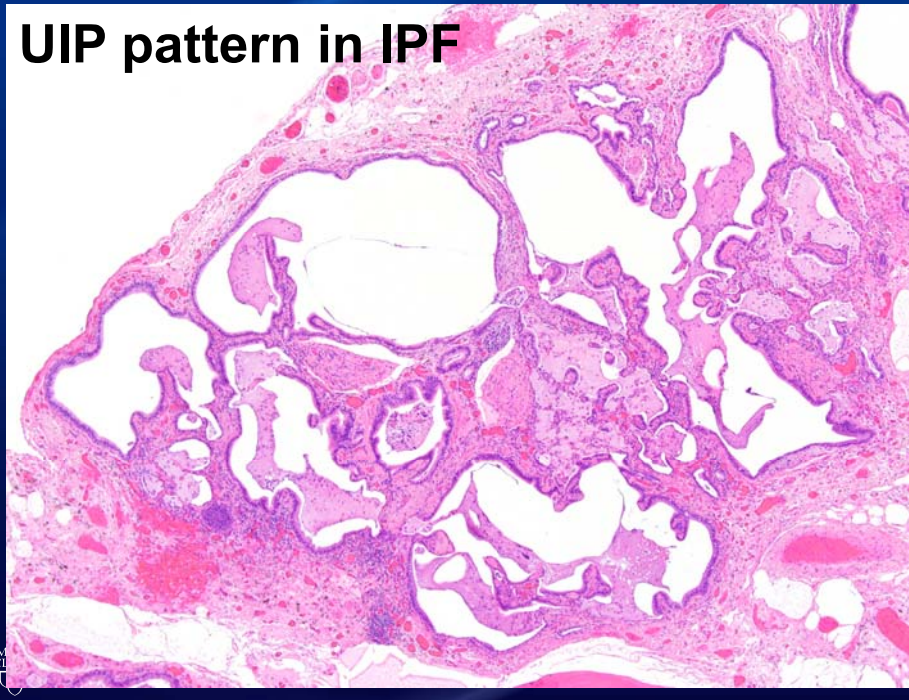
## UIP pattern in IPF



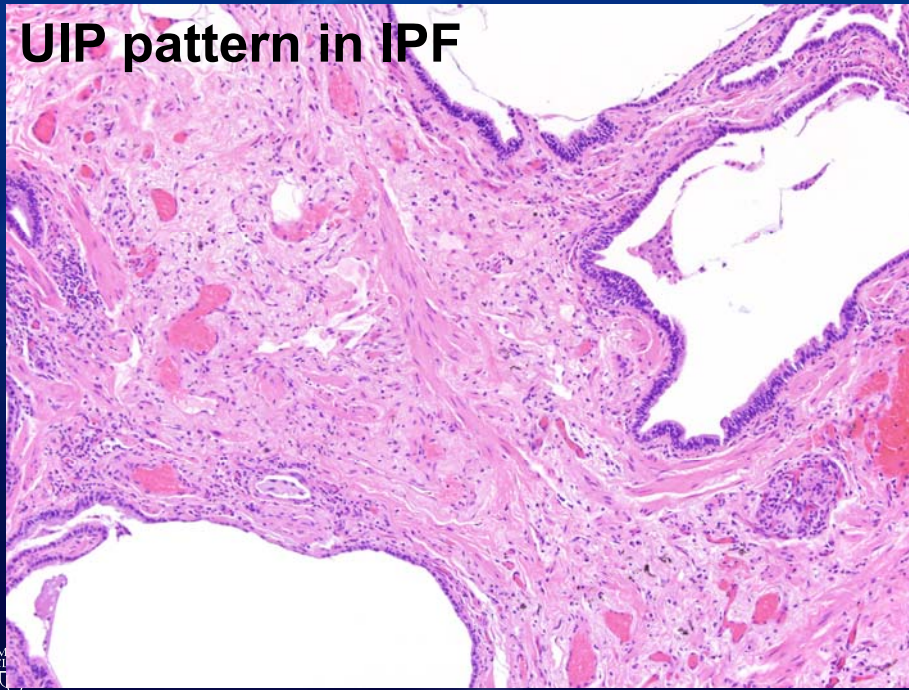
**UIP pattern in IPF**



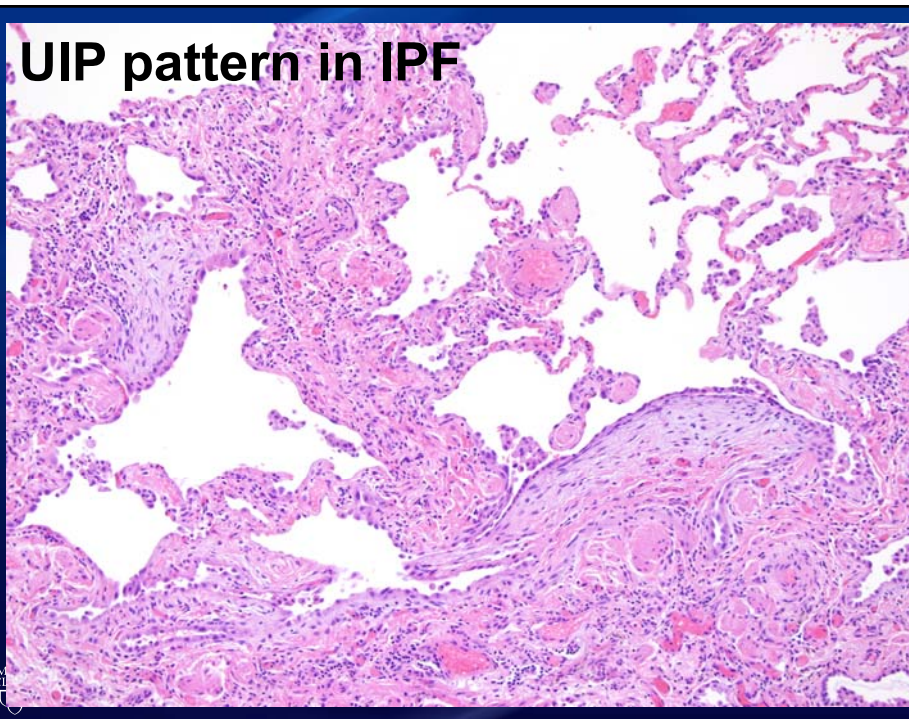
**UIP pattern in IPF**



**UIP pattern in IPF**



**UIP pattern in IPF**





## Histologic UIP pattern in IPF

### UIP Pattern (All Four Criteria)

- Evidence of marked fibrosis/ architectural distortion,  $\pm$  honeycombing in a predominantly subpleural/ paraseptal distribution
- Presence of patchy involvement of lung parenchyma by fibrosis
- Presence of fibroblast foci
- Absence of features against a diagnosis of UIP suggesting an alternate diagnosis (see fourth column)



Raghu G et al., Am J Respir Crit Care Med. 2011;183:788-824

## Diagnosis of IPF: ATS/ERS/JRS/ALAT Guidelines

TABLE 5. HISTOPATHOLOGICAL CRITERIA FOR UIP PATTERN

UIP Pattern (All Four Criteria)	Probable UIP Pattern	Possible UIP Pattern (All Three Criteria)	Not UIP Pattern (Any of the Six Criteria)
<ul style="list-style-type: none"> <li>• Evidence of marked fibrosis/ architectural distortion, <math>\pm</math> honeycombing in a predominantly subpleural/ paraseptal distribution</li> <li>• Presence of patchy involvement of lung parenchyma by fibrosis</li> <li>• Presence of fibroblast foci</li> <li>• Absence of features against a diagnosis of UIP suggesting an alternate diagnosis (see fourth column)</li> </ul>	<ul style="list-style-type: none"> <li>• Evidence of marked fibrosis / architectural distortion, <math>\pm</math> honeycombing</li> <li>• Absence of either patchy involvement or fibroblastic foci, but not both</li> <li>• Absence of features against a diagnosis of UIP suggesting an alternate diagnosis (see fourth column)</li> <li>OR</li> <li>• Honeycomb changes only<sup>‡</sup></li> </ul>	<ul style="list-style-type: none"> <li>• Patchy or diffuse involvement of lung parenchyma by fibrosis, with or without interstitial inflammation</li> <li>• Absence of other criteria for UIP (see UIP Pattern column)</li> <li>• Absence of features against a diagnosis of UIP suggesting an alternate diagnosis (see fourth column)</li> </ul>	<ul style="list-style-type: none"> <li>• Hyaline membranes*</li> <li>• Organizing pneumonia<sup>†</sup></li> <li>• Granulomas<sup>†</sup></li> <li>• Marked interstitial inflammatory cell infiltrate away from honeycombing</li> <li>• Predominant airway centered changes</li> <li>• Other features suggestive of an alternate diagnosis</li> </ul>

*Definition of abbreviations:* HRCT = high-resolution computed tomography; UIP = usual interstitial pneumonia.

\* Can be associated with acute exacerbation of idiopathic pulmonary fibrosis.

<sup>†</sup> An isolated or occasional granuloma and/or a mild component of organizing pneumonia pattern may rarely be coexisting in lung biopsies with an otherwise UIP pattern.

<sup>‡</sup> This scenario usually represents end-stage fibrotic lung disease where honeycombed segments have been sampled but where a UIP pattern might be present in other areas. Such areas are usually represented by overt honeycombing on HRCT and can be avoided by pre-operative targeting of biopsy sites away from these areas using HRCT.



Raghu G et al., Am J Respir Crit Care Med. 2011;183:788-824

## Dx of IPF: ATS/ERS/JRS/ALAT Guidelines

**TABLE 6. COMBINATION OF HIGH-RESOLUTION COMPUTED TOMOGRAPHY AND SURGICAL LUNG BIOPSY FOR THE DIAGNOSIS OF IPF (REQUIRES MULTIDISCIPLINARY DISCUSSION)**

HRCT Pattern*	Surgical Lung Biopsy Pattern* (When Performed)	Diagnosis of IPF <sup>†</sup>
<b>UIP</b>	<b>UIP</b>	<b>YES</b>
	<b>Probable UIP</b>	}
	<b>Possible UIP</b>	
	<b>Nonclassifiable fibrosis<sup>‡</sup></b>	
	Not UIP	No
<b>Possible UIP</b>	<b>UIP</b>	<b>YES</b>
	<b>Probable UIP</b>	}
	<b>Possible UIP</b>	
	<b>Nonclassifiable fibrosis</b>	}
	<b>Not UIP</b>	
<b>Inconsistent with UIP</b>	<b>UIP</b>	<b>Possible<sup>§</sup></b>
	<b>Probable UIP</b>	}
	<b>Possible UIP</b>	
	<b>Nonclassifiable fibrosis</b>	
	Not UIP	No

*Definition of abbreviations:* HRCT = high-resolution computed tomography; IPF = idiopathic pulmonary fibrosis; UIP = usual interstitial pneumonia.  
 Bold type indicates combinations of HRCT and surgical lung biopsy patterns that correspond with a diagnosis of IPF (a YES in the far right column). The combination of UIP HRCT and probable UIP or possible UIP or Nonclassifiable fibrosis (surgical lung biopsy patterns) (for example) equals a diagnosis of IPF; the combination of UIP HRCT and Not UIP (surgical lung biopsy pattern) does not make the diagnosis of IPF.  
 \* Patterns as described in Tables 4 and 5.  
 ‡ Nonclassifiable fibrosis: Some biopsies may reveal a pattern of fibrosis that does not meet the above criteria for UIP pattern and the other idiopathic interstitial pneumonias (1) (see text). These biopsies may be termed "nonclassifiable fibrosis."  
 † The accuracy of the diagnosis of IPF increases with multidisciplinary discussion (MDD). This is particularly relevant in cases in which the radiologic and histopathologic patterns are discordant (e.g., HRCT is inconsistent with UIP and histopathology is UIP). There are data to suggest that the accuracy of diagnosis is improved with MDD among interstitial lung disease experts compared to clinician-specialists in the community setting (126); timely referral to interstitial lung disease experts is encouraged.  
 § Multidisciplinary discussion should include discussions of the potential for sampling error and a re-evaluation of adequacy of technique of HRCT. NOTE: In cases with an "inconsistent with UIP" HRCT pattern and a "UIP" surgical lung biopsy pattern, the possibility of a diagnosis of IPF still exists and clarification by MDD among interstitial lung disease experts is indicated.

## Connective tissue disease-associated ILD

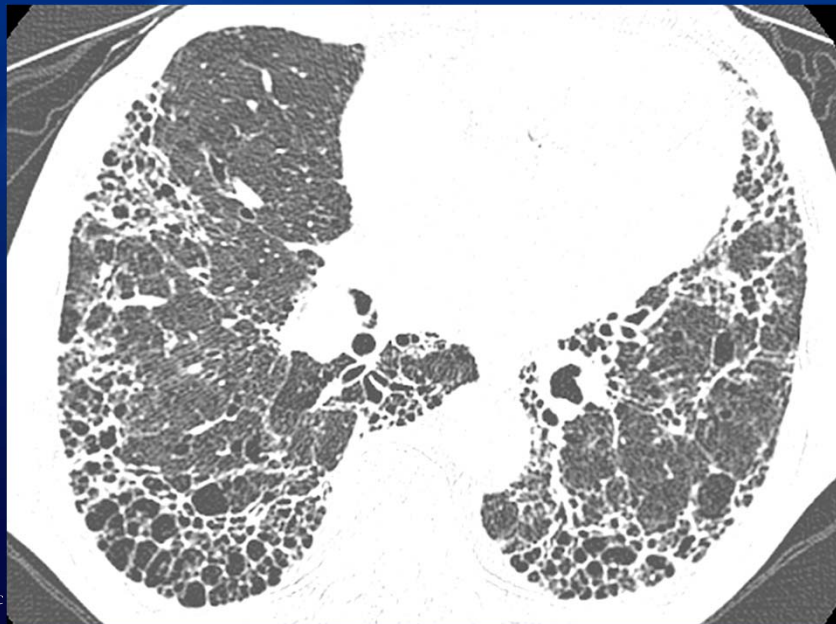


## CTD-associated ILD

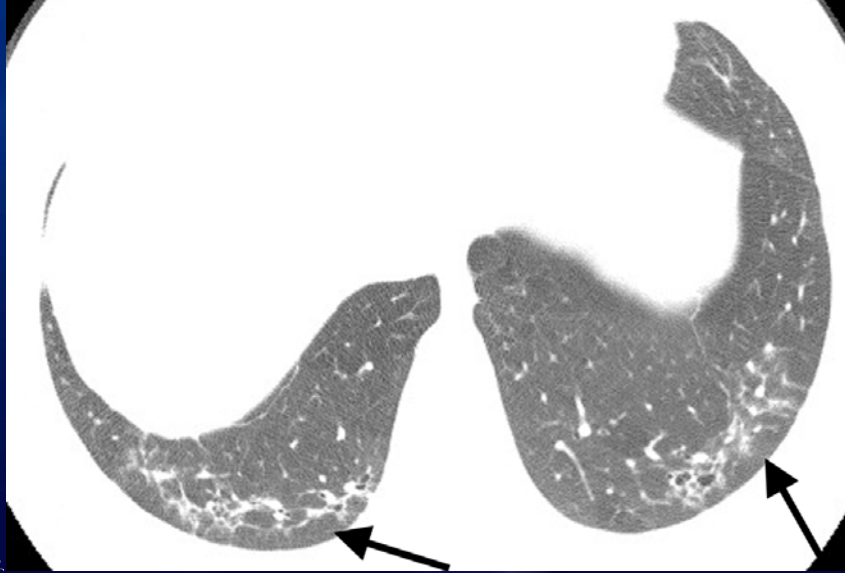
- Lung fibrosis due to CTD
- Most common: RA, PSS, SLE, PM/DM, SS
- Significant ILD ~15%, subclinical nearly 50%
- ~10% present initially with ILD!
- UIP histology: usually RA (others usually NSIP)
- Imaging: UIP or NSIP
- Treatment: Steroids, immunosuppression, LTx



## Rheumatoid arthritis – radiologic UIP

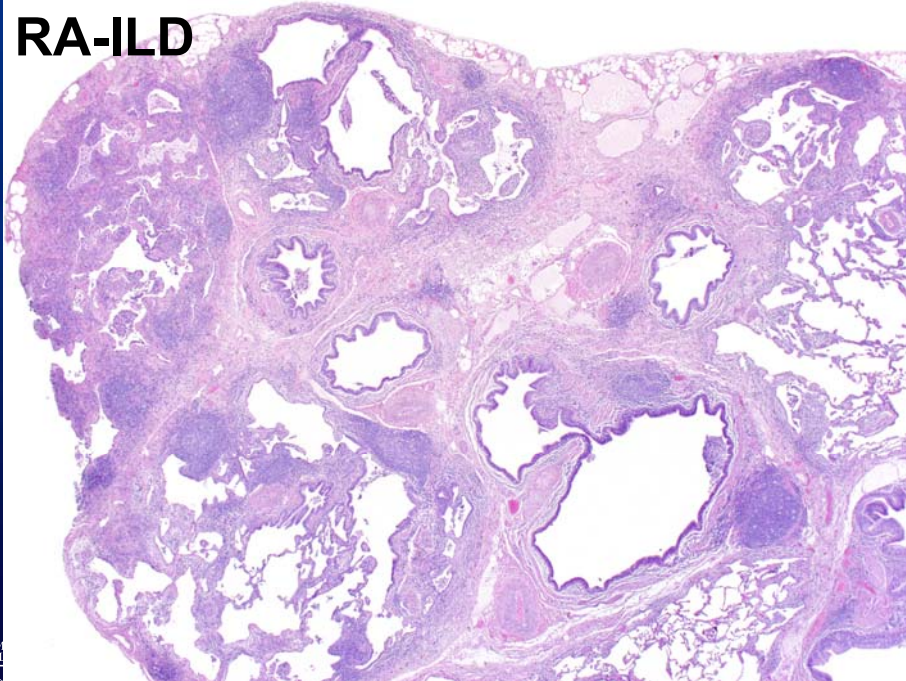


## RA with radiologic NSIP pattern



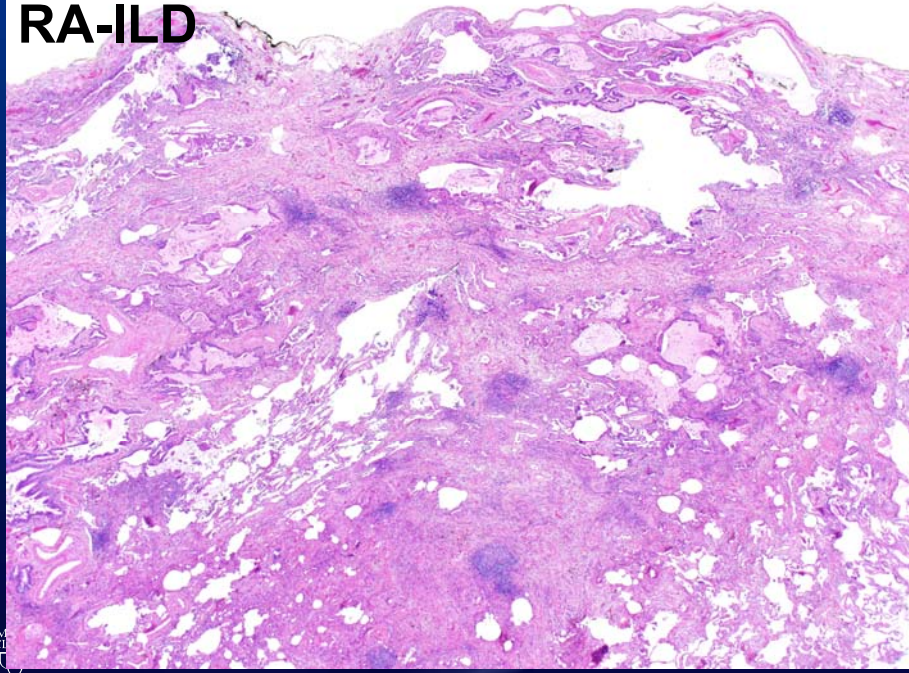
MAYO  
CLINIC

## RA-ILD

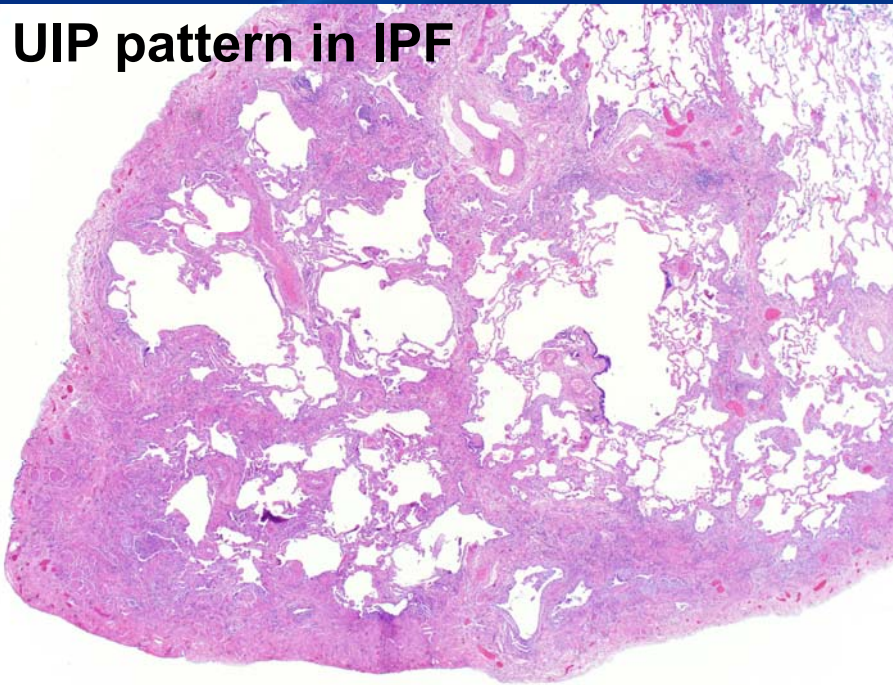


CLB

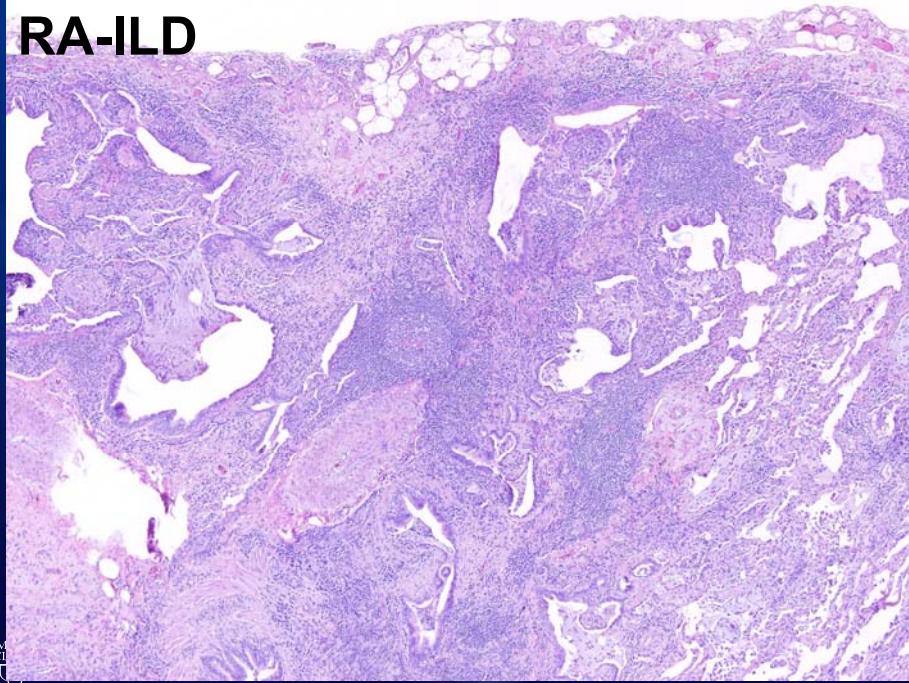
**RA-ILD**



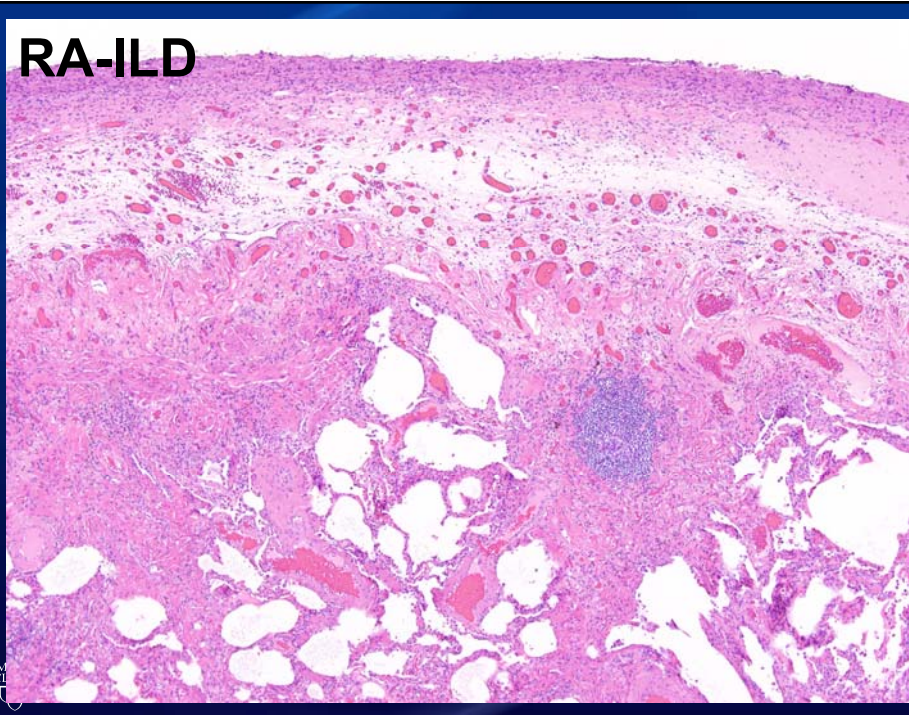
**UIP pattern in IPF**



**RA-ILD**



**RA-ILD**



# Chronic hypersensitivity pneumonitis

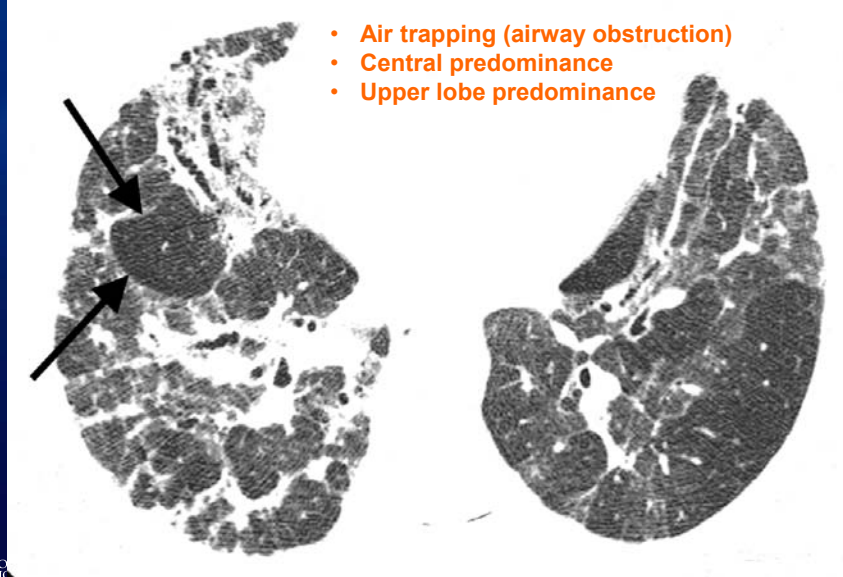


## Chronic HP

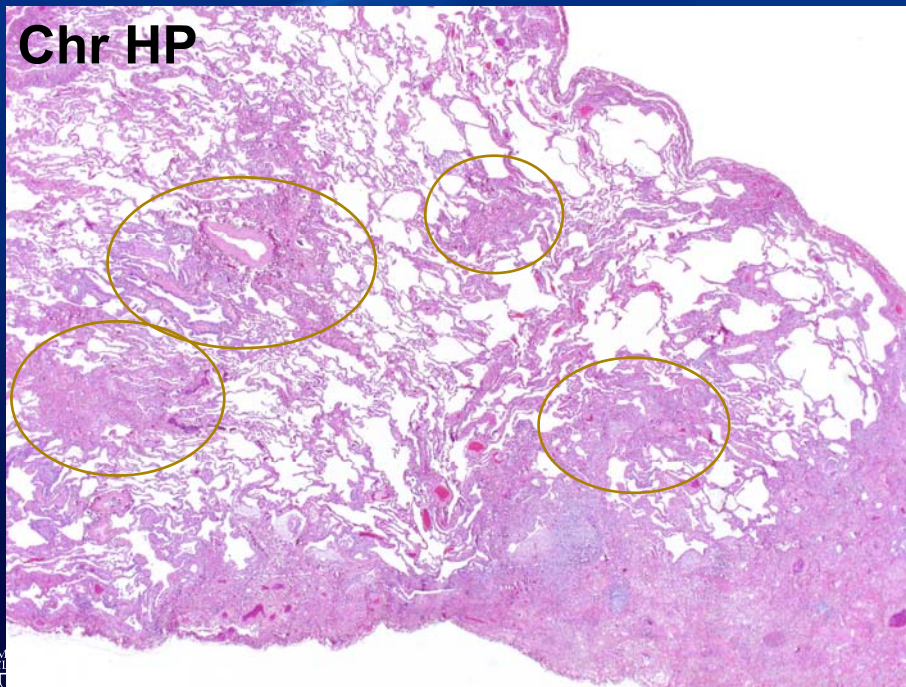
- Lung fibrosis due to exaggerated immune response to inhaled organic antigen
- Antigens: Avian, fungal, bacterial, protozoal proteins, or LMW organic compounds
- Usually NOT smokers
- Treatment: Removal of antigen, steroids, LTx



## Chronic HP



## Chr HP

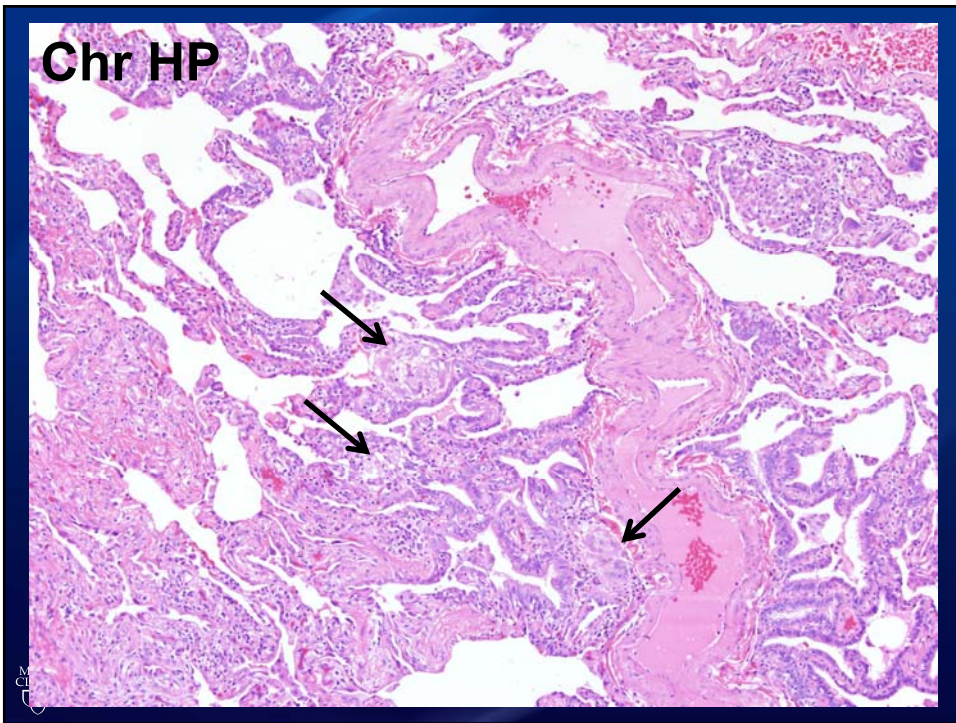




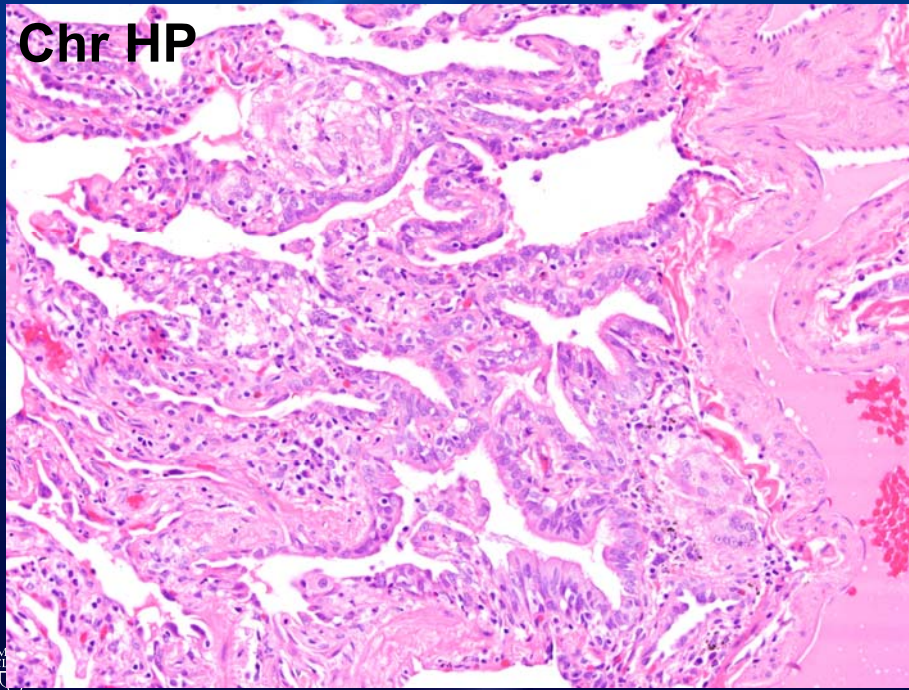
**Chr HP**



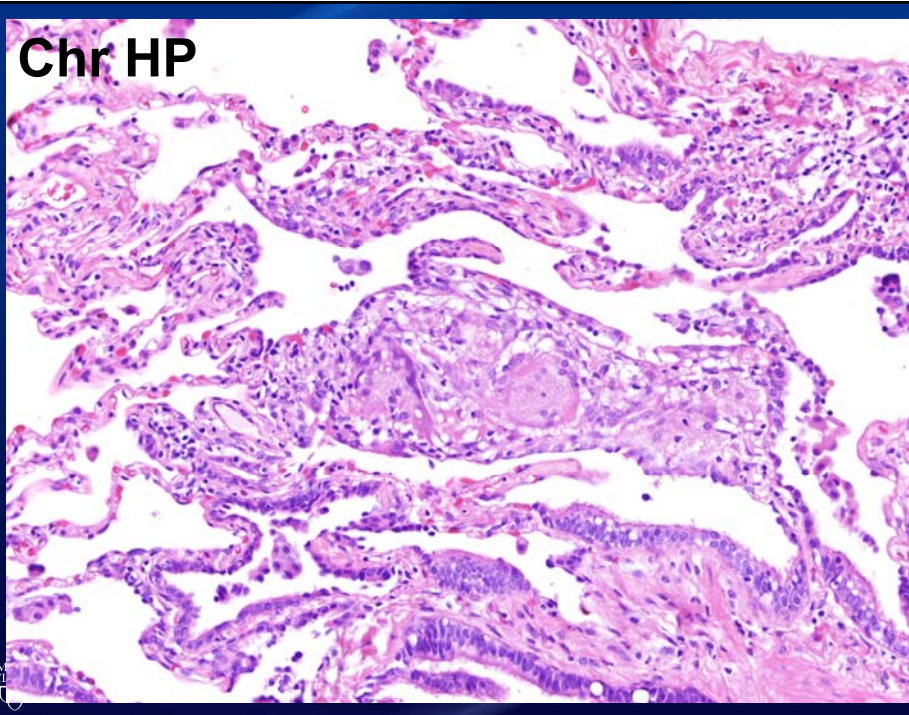
**Chr HP**



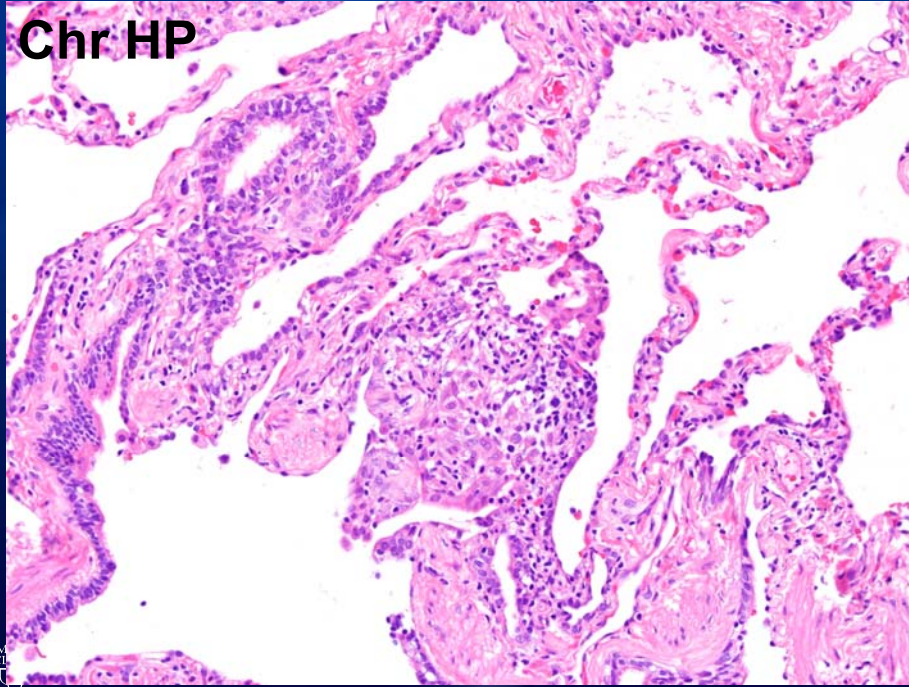
**Chr HP**



**Chr HP**



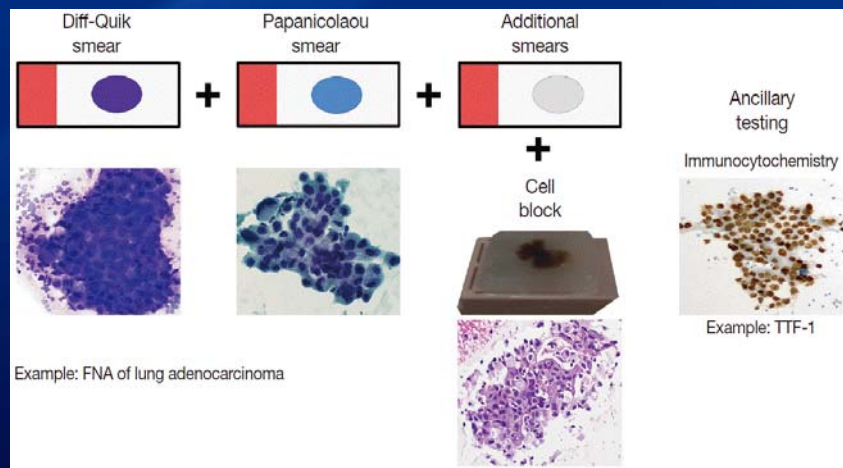
**Chr HP**



### **Part III: Formulating a Clinically Useful Pathology Report**

## Pathology Reporting: Clinician Expectations

- What do you see?
- How bad is it?
- What is causing it?
- How do I treat it?



Adapted from Roh MH, J Pathol Transl Med. 2015;49:300-9.



## Pathology Reporting: Clinician Expectations

- What do you see?
- How bad is it?
- What is causing it?
- How do I treat it?

Lymph node, left supraclavicular, core biopsy:  
Metastatic adenocarcinoma, poorly differentiated, most likely from the lung (see Comment).

Comment: Immunostaining for TTF-1 is positive, indicating that the tumor most likely arose in the lung. Material will be sent to an outside lab for molecular testing for potential targetable mutations, and will be reported separately.



## Pathology Reporting: Clinician Expectations

- **What do you see?**
- How bad is it?
- What is causing it?
- How do I treat it?

Lymph node, left supraclavicular, core biopsy:  
Metastatic adenocarcinoma, poorly differentiated, most likely from the lung (see Comment).

Comment: Immunostaining for TTF-1 is positive, indicating that the tumor most likely arose in the lung. Material will be sent to an outside lab for molecular testing for potential targetable mutations, and will be reported separately.



## Pathology Reporting: Clinician Expectations

- What do you see?
- **How bad is it?**
- What is causing it?
- How do I treat it?

Lymph node, left supraclavicular, core biopsy:  
Metastatic adenocarcinoma, poorly differentiated, most likely from the lung (see Comment).

Comment: Immunostaining for TTF-1 is positive, indicating that the tumor most likely arose in the lung. Material will be sent to an outside lab for molecular testing for potential targetable mutations, and will be reported separately.



## Pathology Reporting: Clinician Expectations

- What do you see?
- **How bad is it?**
- What is causing it?
- How do I treat it?

Lymph node, left supraclavicular, core biopsy:  
Metastatic adenocarcinoma, poorly differentiated, most likely from the lung (see Comment).

Comment: Immunostaining for TTF-1 is positive, indicating that the tumor most likely arose in the lung. Material will be sent to an outside lab for molecular testing for potential targetable mutations, and will be reported separately.

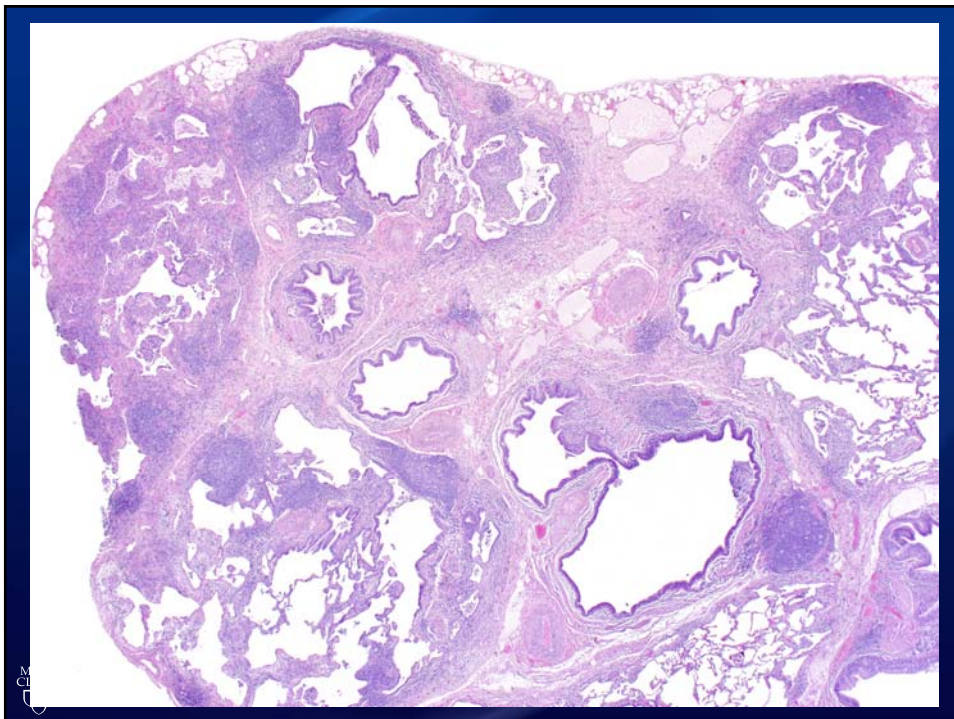


## Pathology Reporting: Clinician Expectations

- What do you see?
- How bad is it?
- What is causing it?
- How do I treat it?

Lymph node, left supraclavicular, core biopsy:  
Metastatic adenocarcinoma, poorly differentiated, most likely from the lung (see Comment).

Comment: Immunostaining for TTF-1 is positive, indicating that the tumor most likely arose in the lung. [Material will be sent to an outside lab for molecular testing for potential targetable mutations](#), and will be reported separately.



## Pathology Reporting: Clinician Expectations

- What do you see?
- How bad is it?
- What is causing it?
- How do I treat it?

Lung, left upper and lower lobes, wedge biopsies:  
Usual interstitial pneumonia.



## Pathology Reporting: Clinician Expectations

- **What do you see?**
- How bad is it?
- What is causing it?
- How do I treat it?

Lung, left upper and lower lobes, wedge biopsies:  
Usual interstitial pneumonia.





## Pathology Reporting: Clinician Expectations

- What do you see?
- What is causing it?
- How bad is it?
- How do I treat it?

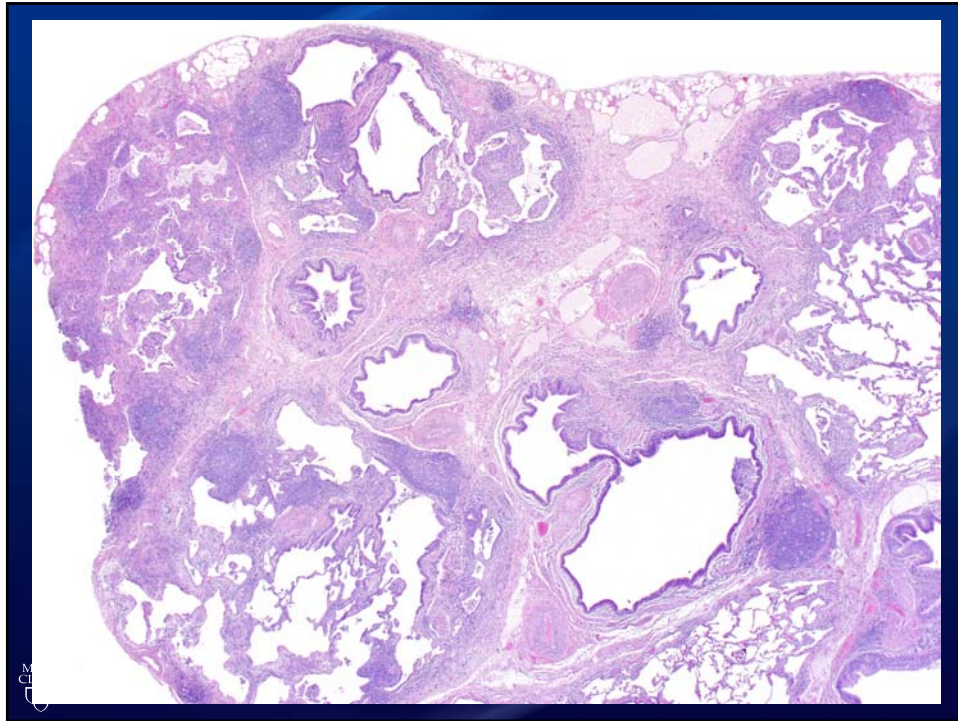
Lung, left upper and lower lobes, wedge biopsies:  
Usual interstitial pneumonia.



## Clinician Toolbox for ILD

1. Antibiotics
2. Bronchodilators and anti-tussives
3. Immunosuppression
4. Small molecule therapy for IPF (perfenidone and nintedanib)
5. PPIs for GERD and microaspiration
6. Pulm HTN disease-modifying agents
7. Transplantation





## Pathology Reporting: Clinician Expectations

- What do you see?
- What is causing it?
- How bad is it?
- How do I treat it?

Lung, left upper and lower lobes, wedge biopsies:  
Advanced fibrosing interstitial pneumonia (see Comment).

Comment: Although the pattern of fibrosis is most consistent with UIP, it is also accompanied by lymphoid hyperplasia and chronic pleuritis, which would not be expected in IPF. Instead, this pattern is most suggestive of connective tissue disease, and hopefully this will be at least partially responsive to steroids. Correlation with clinical, imaging, and serologic findings is recommended.

## Pathology Reporting: Clinician Expectations

- What do you see?
- How bad is it?
- What is causing it?
- How do I treat it?

Lung, left upper and lower lobes, wedge biopsies:  
Advanced fibrosing interstitial pneumonia (see Comment).

Comment: Although the pattern of fibrosis is most consistent with UIP, it is also accompanied by lymphoid hyperplasia and chronic pleuritis, which would not be expected in IPF. Instead, this pattern is most suggestive of connective tissue disease, and hopefully this will be at least partially responsive to steroids. Correlation with clinical, imaging, and serologic findings is recommended.



## Pathology Reporting: Clinician Expectations

- What do you see?
- How bad is it?
- What is causing it?
- How do I treat it?

Lung, left upper and lower lobes, wedge biopsies:  
Advanced fibrosing interstitial pneumonia (see Comment).

Comment: Although the pattern of fibrosis is most consistent with UIP, it is also accompanied by lymphoid hyperplasia and chronic pleuritis, which would not be expected in IPF. Instead, this pattern is most suggestive of connective tissue disease, and hopefully this will be at least partially responsive to steroids. Correlation with clinical, imaging, and serologic findings is recommended.



## Pathology Reporting: Clinician Expectations

- What do you see?
- How bad is it?
- What is causing it?
- How do I treat it?

Lung, left upper and lower lobes, wedge biopsies:  
Advanced fibrosing interstitial pneumonia (see Comment).

Comment: Although the pattern of fibrosis is most consistent with UIP, it is also accompanied by lymphoid hyperplasia and chronic pleuritis, which would not be expected in IPF.

Instead, this pattern is [most suggestive of connective tissue disease](#), and hopefully this will be at least partially responsive to steroids. Correlation with clinical, imaging, and serologic findings is recommended.



## Pathology Reporting: Clinician Expectations

- What do you see?
- How bad is it?
- What is causing it?
- How do I treat it?

Lung, left upper and lower lobes, wedge biopsies:  
Advanced fibrosing interstitial pneumonia (see Comment).

Comment: Although the pattern of fibrosis is most consistent with UIP, it is also accompanied by lymphoid hyperplasia and chronic pleuritis, which would not be expected in IPF.

Instead, this pattern is most suggestive of connective tissue disease, and [hopefully this will be at least partially responsive to steroids](#). Correlation with clinical, imaging, and serologic findings is recommended.



## Take-home messages

- UIP is a pattern, NOT a disease!
- Not all UIP is idiopathic
  - Prognosis
  - Treatment
  - Family members
  - Research (future treatment)
- Pay attention to sub-characteristics
- Clinical history, imaging often provides clues
- Multidisciplinary discussion often required



QUESTIONS?

